

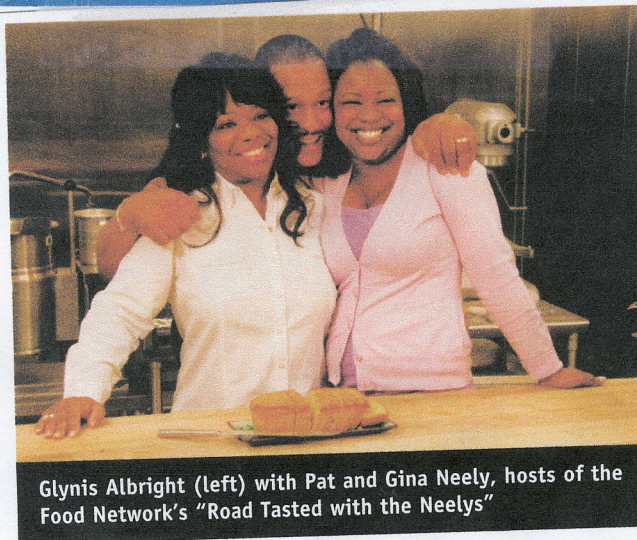
ISSUE NO. 96, AUGUST 2008

S M O O T H

# JAZZ

N E W S

JAZZ BUZZ & THE SUCCULENT LIFE



Glynis Albright (left) with Pat and Gina Neely, hosts of the Food Network's "Road Tasted with the Neelys"

**Glynis Albright, saxophonist Gerald Albright's wife of 27 years, is scheduled to be featured on the Food Network's new TV show, "Road Tasted with the Neelys," on Aug. 5. To promote this segment, Glynis appeared on CBS' "The Early Show," July 22.**

Glynis was chosen by this popular Food Network program to showcase her low-sugar dessert business, Just Sweet Enough. She will be featuring some of her most popular baked goods: sweet potato poundcake and Mrs. Albright's Earl Grey Tea Cakes.

For more information, visit [www.justsweetenough.com](http://www.justsweetenough.com).

*Continued on Page 36*